





 **samet**

HERRAJES Y ACCESORIOS PARA MUEBLES

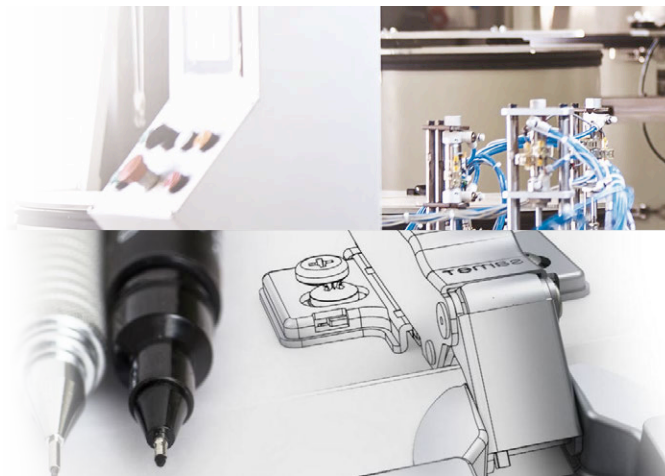
MARCA LIDER DEL MERCADO

- **SAMET** es marca líder en la fabricación de **herrajes y accesorios para muebles**.
- Fundada en 1973 en Estambul, **Turquía**. Es uno de los más grandes de la industria con **42 años de experiencia**.
- Cuenta con **1,300** empleados y 500 puntos de venta.
- Exportaciones a más de **110 países** alrededor del mundo.
- Un catálogo con más de **2,400 productos**.



INNOVACIÓN Y UNA PERSPECTIVA MODERNA

- Pensando en la satisfacción del cliente, **SAMET** ha logrado fusionar **eficiencia** y la más **alta calidad** en sus productos.
- Su desarrollo se da a partir de **innovación** y **modernidad**, garantizando así, funcionalidad y estética en su diseño.
- La producción de estas piezas se lleva a cabo bajo los principios ambientales de la empresa, ahorrando energía y reciclando o reutilizando materiales.



GAMA DE PRODUCTOS

Sistemas de
Bisagras



Sistemas de
Correderas cajones



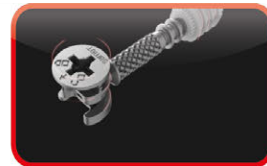
Sistemas de
Apertura vertical



Sistemas de
Correderas puertas



Accesorios y
Sistemas de montaje



BISAGRA DE CLIP - CIERRE SUAVE

invo^{plus}

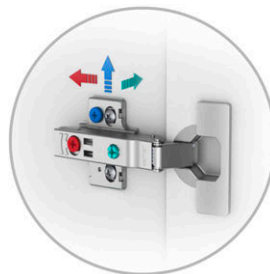


BISAGRA DE CLIP - CIERRE SUAVE

invo^{plus}



Sistema
Soft close (Cierre suave)

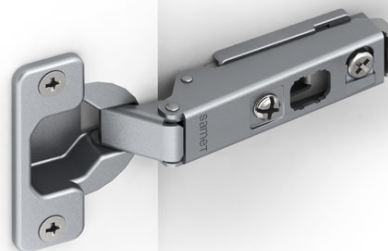


Sistema
Ajuste 3D



Ciclos
80,000

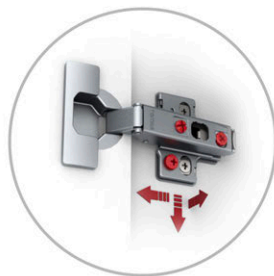
BISAGRA DE CLIP STARTRACK



BISAGRA DE CLIP STARTRACK



Sistema
Montaje / Desmontaje



Sistema
Ajuste 3D



Ciclos
80,000

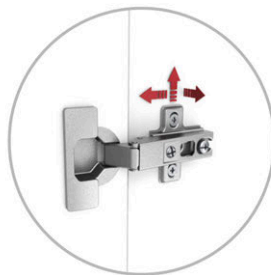
BISAGRA STANDAR STAR



BISAGRA STANDAR STAR



Sistema
Fácil instalación



Sistema
Ajuste 3D



Ciclos
80,000

CORREDERAS PARA CAJONES

smart slide



CORREDERAS PARA CAJONES

smart slide



Visiones
Cierre parcial / Total



Versiones
Push-Open / Soft-Close



Ciclos
50,000 / 30kg carga

CORREDERAS PARA CAJONES

slidea

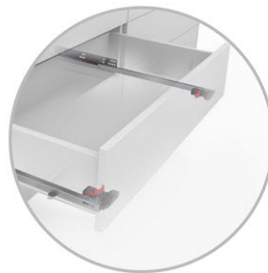


CORREDERAS PARA CAJONES

slidea



Visiones
Lock / Pin locking



Mecanismo
Bloqueo de seguridad



Ciclos
50,000 / 25kg carga

SISTEMAS DE CAJONES

smart box

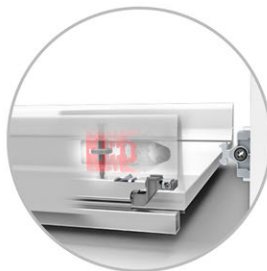


SISTEMAS DE CAJONES

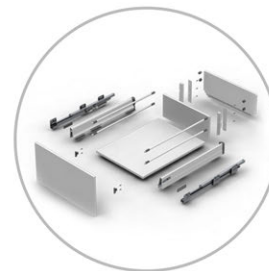
smart box



Sistema
Push-Open / Soft-Close



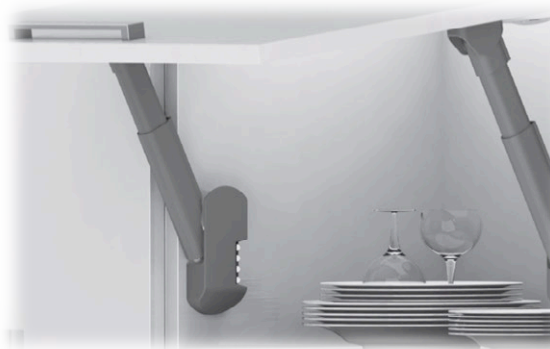
Mecanismo
Bloqueo de seguridad



Componentes de mejora
50,000 / 40kg carga

SISTEMAS DE APERTURA VERTICAL

neolift



SISTEMAS DE APERTURA VERTICAL

neolift



Sistema
Soft-Close



Sistema
Iluminación LED



Capacidad de carga (2pz)
9kg prom.

SISTEMAS DE APERTURA VERTICAL

MonoLift



SISTEMAS DE APERTURA VERTICAL

MonoLift



Sistema abatible
Lift-Up



Mecanismo silencioso
Anti-Collision



Capacidad de carga (1pz)
2kg - 8kg prom.



SISTEMAS DE APERTURA VERTICAL

DuoLift



Tel. 01(55) 5701 · 7163
01(800) 083 · 1172



Calz. Ignacio Zaragoza 1061-D, Col. Agrícola Oriental
Del. Iztacalco, C.P. 08500, México D.F.



www.maderasypasticos.com



mercadotecnia@maderasypasticos.com

SISTEMAS DE APERTURA VERTICAL

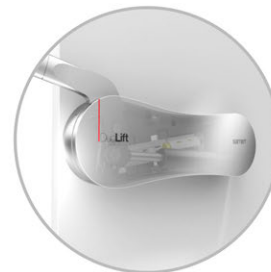
DuoLift



Sistema abatible
Lift-Up



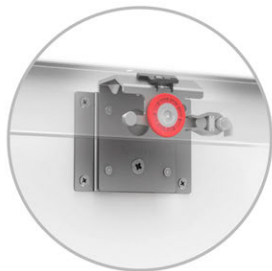
Mecanismo silencioso
Anti-Collision



Capacidad de carga (1pz)
3kg - 21kg prom.

CORREDERAS PARA PUERTAS - RIELES SUPERIORES

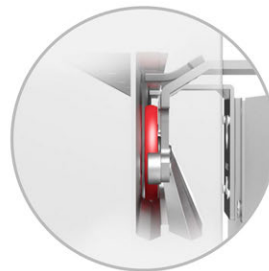
SLIDING DOOR SMT500



Compatibilidad
Medidas de conexión
standar



Mecanismo silencioso
Soft-Close



Alta capacidad de carga
50kg prom.

CORREDERAS PARA PUERTAS - RIELES INFERIORES

SLIDING DOOR **SMT75**



Sistema
Montaje rápido



Mecanismo silencioso
Soft-Close



Compatibilidad
Medidas de conexión
standar



ACCESORIOS Y SISTEMAS DE MONTAJE



Tel. 01(55) 5701 · 7163
01(800) 083 · 1172



Calz. Ignacio Zaragoza 1061-D, Col. Agrícola Oriental
Del. Iztacalco, C.P. 08500, México D.F.



www.maderasypasticos.com



mercadotecnia@maderasypasticos.com

ACCESORIOS Y SISTEMAS DE MONTAJE

fix



Samfix



Jetfix

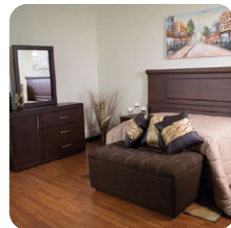


Daset

Utilizados para las conexión de esquinas y demás componentes de madera en la fabricación de muebles.

APLICACIONES

- Los herrajes **SAMES** son la pieza ideal para **fabricantes de cocina** y **sector mueblero** en general.
- Utilizados también en en **diseño** y **decoración de interiores**.





Fabricantes de cocinas



Tel. 01(55) 5701 - 7163
01(800) 083 - 1172



Calz. Ignacio Zaragoza 1061-D, Col. Agrícola Oriental
Del. Iztacalco, C.P. 08500, México D.F.



www.maderasypasticos.com



mercadotecnia@maderasypasticos.com

The logo for 'samet' is displayed in white lowercase letters on a red rectangular background.

Muebles para el hogar



Tel. 01(55) 5701 · 7163
01(800) 083 · 1172



Calz. Ignacio Zaragoza 1061-D, Col. Agrícola Oriental
Del. Iztacalco, C.P. 08500, México D.F.



www.maderasypasticos.com



mercadotecnia@maderasypasticos.com

The logo for 'samet' features a stylized red 'S' icon followed by the brand name 'samet' in white lowercase letters on a red rectangular background.

Muebles para el hogar



Tel. 01(55) 5701 - 7163
01(800) 083 - 1172



Calz. Ignacio Zaragoza 1061-D, Col. Agrícola Oriental
Del. Iztacalco, C.P. 08500, México D.F.



www.maderasypasticos.com



mercadotecnia@maderasypasticos.com



Muebles para el hogar



Tel. 01(55) 5701 - 7163
01(800) 083 - 1172



Calz. Ignacio Zaragoza 1061-D, Col. Agrícola Oriental
Del. Iztacalco, C.P. 08500, México D.F.



www.maderasypasticos.com



mercadotecnia@maderasypasticos.com







CERTIFICACIONES DE CALIDAD

LGA - Qualitäts - Zertifikat TÜV Rheinland
LGA-Quality-Certificate

Gesamtingenieurshaber
LGA Center
SAMET KALIP VE MADENİ EYSA SAN TİC A.Ş.
ATAÜRK MAH. İNÖNÜ CAD. NO: 13
34512 ESENÜRTÜ İSTANBUL
Türkiye

Zertifiziertes Produkt (currently other languages)
Certified Product (currently other languages)
Drawer rail "Slider" / Drawability: 40 000 cycles

Problem: Test rack

LGA-Qualitäts-Zertifikat Nr.: LI 6009287 0001
LGA-Übersichtszertifikat Nr.: 2712644 001
LGA-Produkt-Nr.:
Dress-Zertifikat (if gültig) bis: 12.04.2014
Dress-Zertifikat (if gültig) bis: 12.04.2014
Dress-Zertifikat (if gültig) bis: 12.04.2014
Dress-Zertifikat (if gültig) bis: 12.04.2014

Deliver Date: 07.08.2014
Zertifizierungsstelle (if applicable)
Dipl.-Ing. H. Schmidt
TÜV Rheinland LGA Products GmbH | Tapfstraße 2 | 50124 Bergneuburg
TÜV Rheinland LGA Products GmbH | Tapfstraße 2 | 50124 Bergneuburg

TÜV Rheinland LGA Products GmbH
TÜV Rheinland

Quality Certificate

The TÜV Rheinland LGA Products GmbH
confirms herewith that the company
**Samet Kalip ve Madeni Eyasa San. Ve Tic. A.Ş. Namık
Azatlık mah. İnönü cad No: 13 ESENÜRTÜ
34512 İSTANBUL
Türkiye**
has their product
„Star Track – 3D Adjustable Hinge“
independently and permanently approved within the scope of a surveillance agreement
according to the conditions set forth in the general contract.

Quality requirements	Results
Design	OK
Strength and usage	Requirements met: 1. DIN EN 12938:2008 and 2. PMS L 3814/2:08
Quality assurance	Internal and external monitoring

Valid until: 12.03.2011
Quality Certificate no.: LI 6009189 0001
Test Report no.: 2113464_003

BTH

LGA
TÜV Rheinland LGA Products GmbH

Quality Certificate

The TÜV Rheinland LGA Products GmbH
confirms herewith that the company
**Samet Kalip ve Madeni Eyasa
San. Ve Tic. A.Ş.
34500 B. Coksekrete İstanbul
Türkiye**
has their product
**Extension system „Smart Smart Box (softclosing)“
500 mm / 40 kg**
independently and permanently approved within the scope of a surveillance agreement
according to the conditions set forth in the general contract.
The quality requirements as mentioned below are fully met.

Quality requirements	Results, Tests and Reports
Design, functionality and assembly	OK (EN 12938 part 2 and TSP requirements)
Strength	OK (EN 12938 part 2 and TSP requirements)
Functionality	OK (EN 12938 part 2 and TSP requirements)
Final test	OK (EN 12938 part 2 and TSP requirements)
Quality assurance	Internal and external monitoring
Design, functionality and assembly	Requirements met: 1. DIN EN 12938:2008 and 2. PMS L 3814/2:08
Strength	Requirements met: 1. DIN EN 12938:2008 and 2. PMS L 3814/2:08
Functionality	Requirements met: 1. DIN EN 12938:2008 and 2. PMS L 3814/2:08
Final test	Requirements met: 1. DIN EN 12938:2008 and 2. PMS L 3814/2:08
Quality assurance	Internal and external monitoring

Valid until: 12.03.2011
Quality Certificate no.: 602648 10
Test Report no.: 2110960_003

Jay

LGA
TÜV Rheinland LGA Products GmbH

Quality Certificate

The TÜV Rheinland LGA Products GmbH
confirms herewith that the company
**Samet Kalip ve Madeni Eyasa
San. Ve Tic. A.Ş.
34500 B. Coksekrete İstanbul
Türkiye**
has their product
**Extension system „Smart Smart Box (softclosing)“
500 mm / 40 kg**
independently and permanently approved within the scope of a surveillance agreement
according to the conditions set forth in the general contract.
The quality requirements as mentioned below are fully met.

Quality requirements	Results, Tests and Reports
Design, functionality and assembly	Requirements met: 1. DIN EN 12938:2008 and 2. PMS L 3814/2:08
Strength	Requirements met: 1. DIN EN 12938:2008 and 2. PMS L 3814/2:08
Functionality	Requirements met: 1. DIN EN 12938:2008 and 2. PMS L 3814/2:08
Final test	Requirements met: 1. DIN EN 12938:2008 and 2. PMS L 3814/2:08
Quality assurance	Internal and external monitoring
Design, functionality and assembly	Requirements met: 1. DIN EN 12938:2008 and 2. PMS L 3814/2:08
Strength	Requirements met: 1. DIN EN 12938:2008 and 2. PMS L 3814/2:08
Functionality	Requirements met: 1. DIN EN 12938:2008 and 2. PMS L 3814/2:08
Final test	Requirements met: 1. DIN EN 12938:2008 and 2. PMS L 3814/2:08
Quality assurance	Internal and external monitoring

Valid until: 12.03.2011
Quality Certificate no.: 602648 10
Test Report no.: 2110960_003

Jay



Tel. 01(55) 5701 - 7163
01(800) 083 - 1172



Calz. Ignacio Zaragoza 1061-D, Col. Agrícola Oriental
Del. Iztacalco, C.P. 08500, México D.F.



www.maderasypasticos.com
@ mercadotecnia@maderasypasticos.com



CERTIFICACIONES DE CALIDAD

Business Stream Products
Business

TUV Rheinland

Test Report No.: 27112296 001 Seite 1/11
Test Report No. Page 1/11

Objekt: SAMET KALIP VE MADNE EYVA SAN. VE TIC. A.Ş.
Ankara Mah. İncek. Cad. No:8 34133 Etiler/Beşiktaş / Türkiye

Test numarası: BİSİS Coktaneraj / BİSİS Coktaneraj Test
Test No.

Tanımlama: Coktanerajlı süzme filtre mekanizması Ser. No.: A.
Test numarası BİSİS ile aynıdır (BİSİS ile aynıdır).

Mal Kabul No.: 13054 Giriş tarihi: 01.04.2013
Request No. Date of issue

Test yeri: Fuar Mahallesi, Köktürk Parkı Kat:1
16050 İnşaat/Bursa-Türkiye
Test location

Test Barları: DIN EN 13320:2010
and with respect to the present state of engineering.
Test standards

Test Soruları: Test customer'ın test performansı doğrultusunda.
Test questions

Test Laboratuvarı: TÜV Rheinland Türkiye Mübadele Test Laboratuvarı, İnşaat
TÜV Rheinland Turkey Mutual Trading Laboratory, Building

Test eden / **İnceleyen** **Kontrol eden /** **Yazdıran**

16.04.2013 APT GENEL / F. İsmail Şenel 16.04.2013 Emrah Kurt / Tamer Mızrak
Tarih Test Performansı İnceleme Kontrol Laboratuvarı
Date Test Performance Inspection Control Laboratory

Diğer Bilgiler / **Other Aspects:**

Yıllık üretim kapasitesi hakkında bilgilendirme için gönderildi. Test numarasının bir alternatifi değerlendirilmediği için raporun bir alternatif olarak değerlendirilmesi mümkün değildir. Test numarasının bir alternatifi değerlendirilmediği için raporun bir alternatif olarak değerlendirilmesi mümkün değildir.

Institut für Messprüfung und Qualitätsüberwachung
Messprüfanstalt

LGQA

Untersuchungsbericht
No. 1892 WSL 221 12847

Auftraggeber: samet
KALIP VE MADNE EYVA SAN. VE TIC. A.Ş.
Nispetiye Köyü, İncek Mahallesi
No: 8 Kiriş Beşiktaş
34093 B. Coktaneraj - İstanbul
Türkiye

Gegenstand: Schieber "Star 110, Art.Nr. 61701"
mit Kegelplatte Art.Nr. 02402 (Tausch)
(Prüfstruktur vom Auftraggeber angefordert)

Auftrag: Prüfung nach DIN 48 857, Aug. 05/1986

Freistellung:
Das Schieber "Star 110, Art.Nr. 61701" mit Kegelplatte, Art.Nr. 02402 wurde einer Prüfung nach DIN 48 857, Aug. 05/1986 mit 40 000 Belegungen unterzogen.
Unverändert wurden Verschiebegeräte, Zahntrieb und Abbremsung für die Beladung der Tischkreisläufe und deren Komponenten gemäß der Trägerkonstruktion freigegeben anbestellbar verwendet.

Zusammenfassung der Befunde:
Die Aufbauten nach DIN 68 857 werden mit Schieber "Star 110" und Kegelplatte erfüllt.
Einrichtungen für Prüfbeladung und Freigabe sind dem Empfänger bereit zu stellen.
Nürnberg, 18.05.2013 (geliefert 28.09.2013)

LGQA - BÜRO PRODUKTE
Institut für Messprüfung und Qualitätsüberwachung
Inhaber: DRG-MBZ
i.V. F. Rosenfeld
Dipl.-Ing. (FH) F. Künzendorfer
Hauptberuflicher Sachverständiger

Der Untersuchungsbericht umfasst 7 Tabellen.
LGA-Messprotokollnummer: WSL 221 12847, Seite 1 von 1
LGA - 1. Hb. - November 2012, 20095 Seiten

Business Stream Products
Business

TUV Rheinland

Test Report No.: 27112498 001 Seite 1/13
Test Report No. Page 1/13

Objekt: SAMET KALIP VE MADNE EYVA SAN. VE TIC. A.Ş.
Ankara Mah. İncek. Cad. No:8 34133 Etiler/Beşiktaş / Türkiye

Test numarası: İSİS Mesajlar / İSİS Mesajlar Test
Test No.

Tanımlama: Mesajlar ve Mesajlar Ser. No.: A.
Test numarası İSİS ile aynıdır (İSİS ile aynıdır).

Mal Kabul No.: 13054 Giriş tarihi: 13.05.2013
Request No. Date of issue

Test yeri: Fuar Mahallesi, Köktürk Parkı Kat:1
16050 İnşaat/Bursa-Türkiye
Test location

Test Barları: DIN EN 13320:2010
and with respect to the present state of engineering.
Test standards

Test Soruları: Test customer'ın test performansı doğrultusunda.
Test questions

Test Laboratuvarı: TÜV Rheinland Türkiye Mübadele Test Laboratuvarı, İnşaat
TÜV Rheinland Turkey Mutual Trading Laboratory, Building

Test eden / **İnceleyen** **Kontrol eden /** **Yazdıran**

21.05.2013 APT GENEL / F. İsmail Şenel 21.05.2013 Emrah Kurt / Tamer Mızrak
Tarih Test Performansı İnceleme Kontrol Laboratuvarı
Date Test Performance Inspection Control Laboratory

Diğer Bilgiler / **Other Aspects:**

Yıllık üretim kapasitesi hakkında bilgilendirme için gönderildi. Test numarasının bir alternatifi değerlendirilmediği için raporun bir alternatif olarak değerlendirilmesi mümkün değildir. Test numarasının bir alternatifi değerlendirilmediği için raporun bir alternatif olarak değerlendirilmesi mümkün değildir.



Tel. 01(55) 5701 - 7163
01(800) 083 - 1172



Calz. Ignacio Zaragoza 1061-D, Col. Agrícola Oriental
Del. Iztacalco, C.P. 08500, México D.F.



www.maderasypasticos.com
@ mercadotecnia@maderasypasticos.com





www.maderasypasticos.com